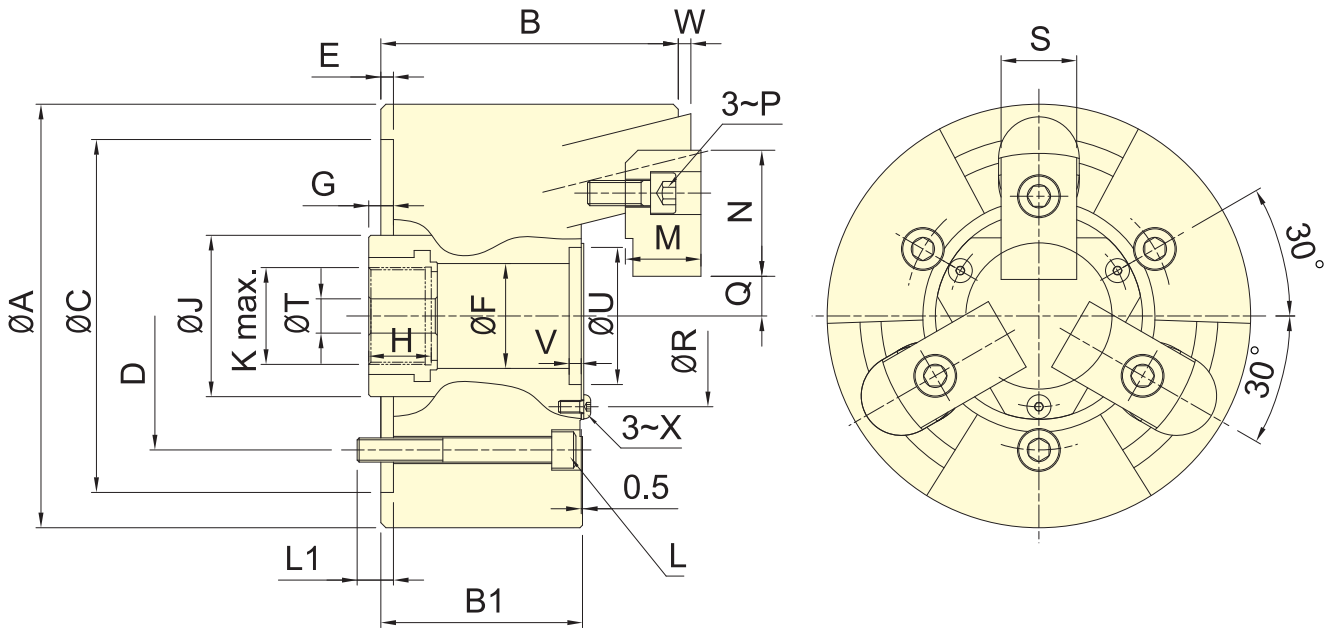


Application/customer benefits

- It's a Pin-Arbor Draw Down type 3-jaw thru-hole power chuck.
- High radial gripping force and high accuracy.
- Suitable for heavy machining.



* Subject to technical changes.

Specifications

Model	Plunger stroke (mm)	Jaw stroke (Dia.) (mm)	Chucking Dia. Max. (mm)	Chucking Dia. Min. (mm)	Max. D.B. pull kN (kgf)	Max. clamping force kN (kgf)	Max. speed min ⁻¹ (r.p.m.)	I kg · m ²	Weight (kg)	Matching cyl.	Max. pressure MPa (kgf/cm ²)
3U-203	4	2	42	14	5.8(590)	16.7(1700)	10000	0.001	1.8	RK-75(N)	1.6(16)
3U-204	6	3	60	10	10.0(1020)	28.4(2900)	8000	0.005	3.9	RK-75(N)	2.7(27)
3U-205	6	3	84	15	13.9(1420)	39.7(4050)	8000	0.012	6.8	RK-100(N)	2.0(20)
3U-206	10	5	105	24	17.9(1830)	57.8(5900)	7000	0.055	14.7	RK-100(N)	2.6(26)
3U-208	10	5	132	25	25.0(2550)	80.0(8150)	6000	0.14	25.5	RK-125(N)	2.2(22)
3U-210	10	5	163	34	35.0(3570)	100.0(10100)	4500	0.36	43.5	RK-125(N)	3.1(31)
3U-212	10	5	210	81	35.0(3570)	100.0(10100)	3600	0.68	63	RK-125(N)	3.1(31)

Dimensions

Model	A	B	B1	C(H6)	D	E	F	G max.	G min.	H	J	K	L	L1	M	N	P	Q max.	Q min.	R	S	T	U(H6)	V	W Max.	W Min.	X
3U-203	85	54.5	42	70	54	3.5	25	18	14	22	38	M20x1.5	3~M8	11	12	26	M5	7.5	6.5	38	15	10	32	3.5	2	-2	M3
3U-204	110	72.5	55	85	70.6	4	30	16	10	24.5	42	M24x1.5	3~M10	12	17	32	M6	10.75	9.25	46	20	10	38	4	3	-3	M4
3U-205	135	84.5	63	110	82.6	4	35	16	10	26	50	M28x1.5	3~M10	15	20	41.5	M8	13.25	11.75	55	24	10	45	5	3	-3	M5
3U-206	168	118	80	140	104.8	5	45	20	10	31	60	M35x1.5	3~M10	16.5	30	50	M10	15.75	13.25	72	30	17	58	6	5	-5	M5
3U-208	210	137	92	170	133.4	5	52	21	11	31	80	M48x2	3~M12	18	34	63	M12	16.25	13.75	82	35	17	68	6	5	-5	M6
3U-210	254	152	102	220	171.4	5	75	25	15	37	105	M68x2	3~M16	23	39	74	M14	20.75	18.25	107	40	17	93	6	5	-5	M8
3U-212	304	157	102	220	171.4	5	100	25	15	37	135	M92x2	3~M16	26	44	74	M14	44.25	41.75	130	40	17	114	6	5	-5	M10

SPECIAL PURPOSE